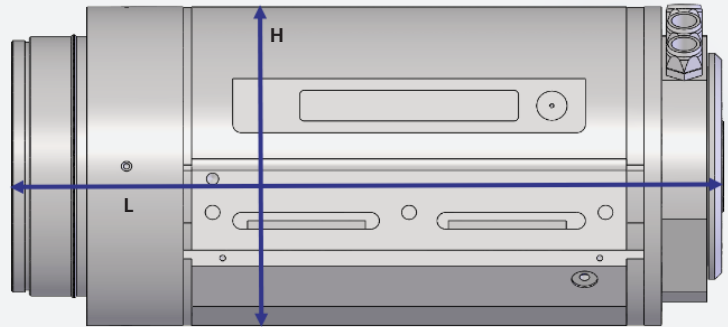
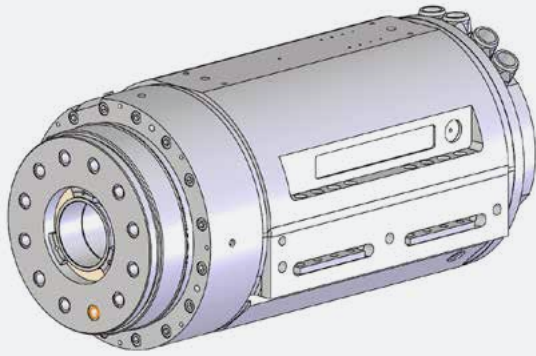


Grinding spindle MSP_S4o_Z30



Article number	ZV05-063-00K		
Maximum speed		[1/min]	4.000
Housing	Spindle with round screw-on housing, closed cooling system		
	Length of spindle [L]	[mm]	815
	Chassis [D]	[mm]	440
Bearing	Arrangement	< >	< >
	Ø Inside	Bearing front	[mm] 150
		Rear bearing	[mm] 100
Lubrication	Type	Permanent grease lubrication	
	Lubricant	GS34	
Motor	Designation	1FE1147-8WN	
	Y	Rated speed	[1/min] 1.050
		Torque S1 / S6-40%	[Nm] 820 / 1000
		Power S1 / S6-40%	[kW] 92 / 105
	Motor type	synchronous	
	Inverter	SIN 200/280 A	
	Cooling medium	Water+glycol	
Sealing	Version	Labyrinth seal	
		air-locked	
Interface	Type	Cylinder D300	
	Actuation type	without	
	Power generation	without	
Rotating union	Version	without	
Encoder	Version	Heidenhain ERM2400	
	Number of increments	2400	
Options	Temperature sensor		
	Vibration sensor		
	Structure-borne sound sensor in the spindle		
	Automatic built-in balancing head D80		
	Short taper according to DIN 55026		
	Outer taper mount with taper 1 : 7.5		
	Cylindrical insertion chassis		

Werkzeugmaschinenbau Ziegenschain GmbH

Am Entenfang 24
D-34613 Schwalmstadt-Ziegenschain

T +49 6691 9461-0
F +49 6691 9461-20

Service-Hotline

for assemblies T +49 6691 9461-44
for machines T +49 6691 9461-38